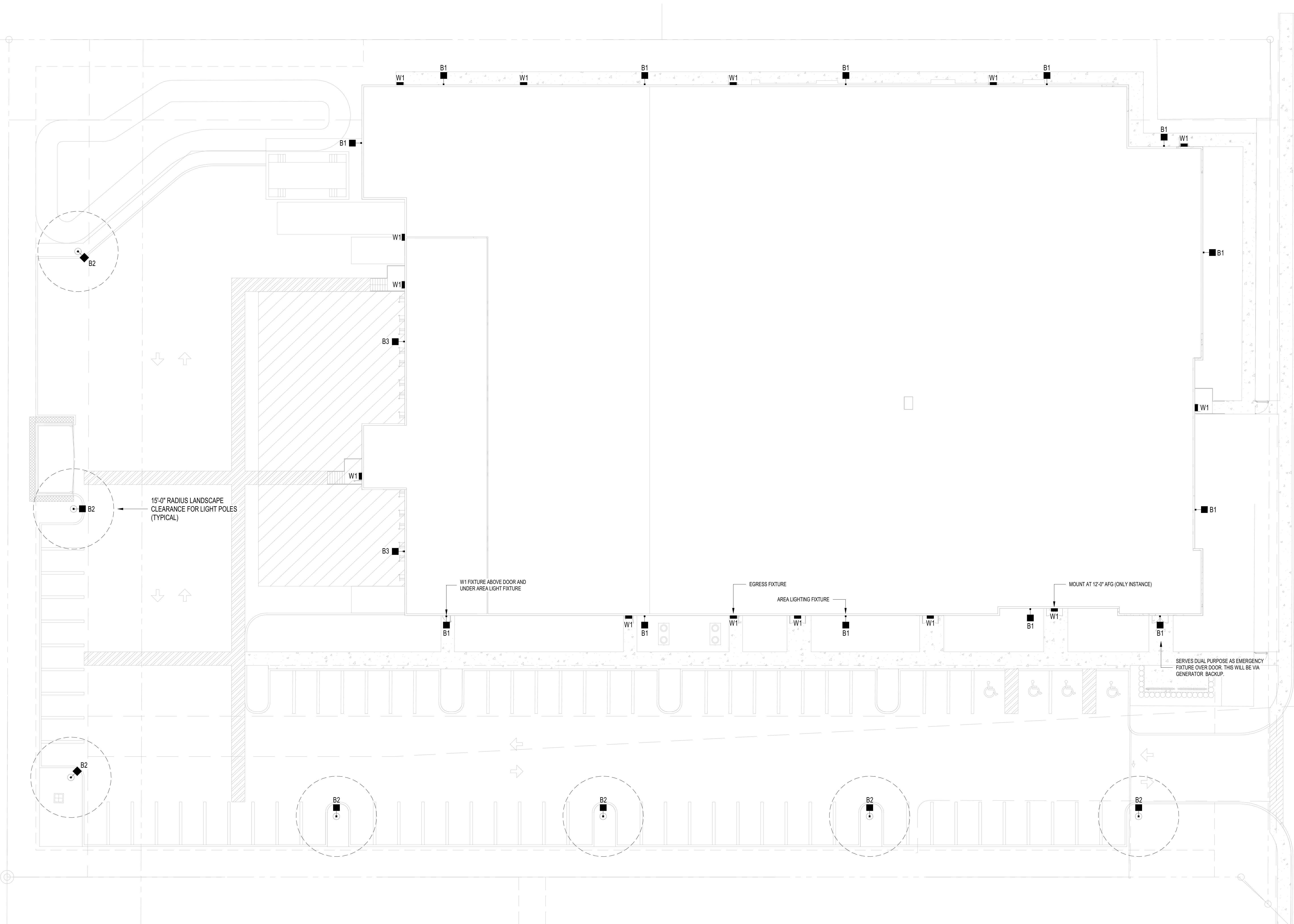


NOTES:

- ALL SITE LIGHTING FIXTURE HEADS SHALL BE ALIGNED AS SHOWN ON THE DRAWINGS AND MOUNTED AT THE SPECIFIED HEIGHTS. SEE NOTE #2.
- SITE LIGHTING FIXTURES SHALL BE MOUNTED AS FOLLOWS:
 - POLES MOUNTED FIXTURES: 25'-0" POLES WITH 9'-0" BASES.
 - WALL MOUNTED FIXTURES: 30'-0" ON WALL.
- SHIFT WALL FIXTURES AS NECESSARY TO ACCOMMODATE OBSTRUCTIONS AND ROOF DRAINAGE.
- SITE LIGHTING CONTROL
 - ALL SITE AREA LIGHTING SHALL BE CONTROLLED VIA A CONTACTOR ASSEMBLY ACTUATED BY A ROOF MOUNTED PHOTOCELL.
 - LOCATE THE CONTACTOR ASSEMBLY WITHIN CLOSE PROXIMITY OF THE ASSOCIATED LIGHTING PANEL (80FT OR LESS). IF NECESSARY, INSTALL THE CONTACTOR ABOVE THE LIGHTING PANEL.
- ALL SITE LIGHTING SHALL BE FED BY #8 CABLE (WALL MOUNTED, POLE MOUNTED, AND AT FINISHED GRADE).



1 SITE LIGHTING
1/16" = 1'-0"